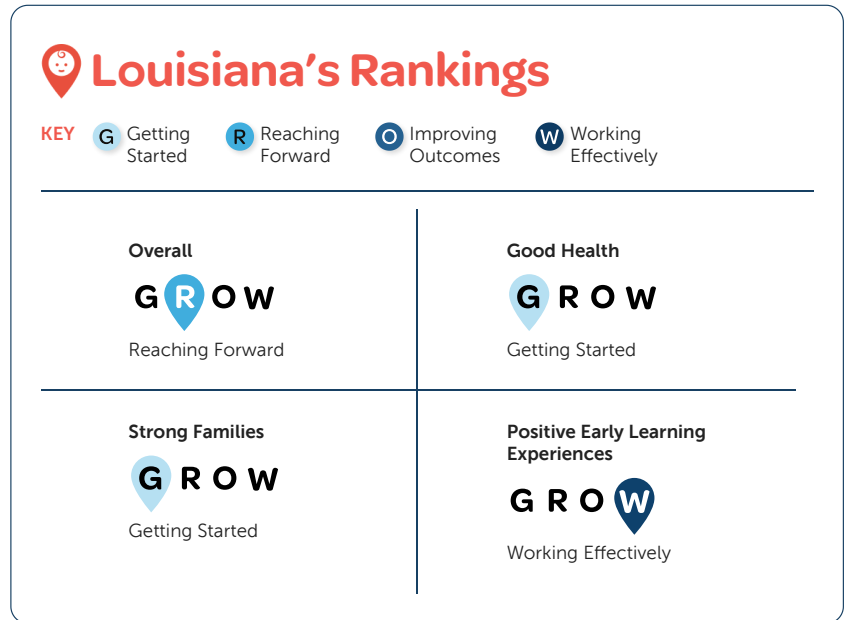




**W**here children are born can affect their chances for a strong start in life. Babies need good health, strong families, and positive early learning experiences to foster their healthy brain development and help them realize their full potential.

This fact sheet provides a snapshot of how infants, toddlers, and their families are faring with respect to these three developmental domains. For each domain, selected child or family indicators and policy indicators are highlighted and compared to national averages. Important demographic information is also included. A summary table of all indicators is provided on the last page, for reference.



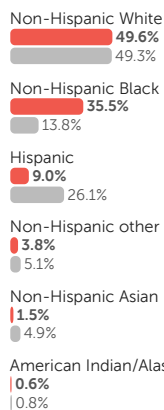
## Demographics Infants and toddlers in Louisiana

### Overview

Louisiana is home to 188,400 infants and toddlers, representing 4 percent of the state's population. As many as 52 percent live in households with incomes less than twice the federal poverty line (in 2017, about \$50,000 a year for a family of four), placing them at economic disadvantage. America's youngest children are diverse and are raised in a variety of family contexts. A broad array of policies and services are required to ensure that all of them have an equitable start in life.

LOUISIANA NATIONAL AVERAGE

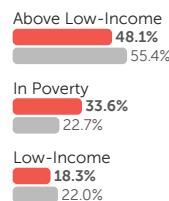
#### Race/ethnicity of infants and toddlers



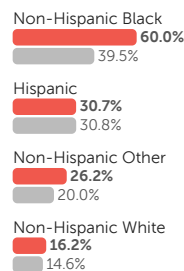
#### Working moms



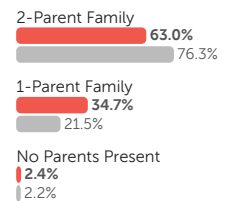
#### Poverty status of infants and toddlers



#### Infants and toddlers in poverty, by race



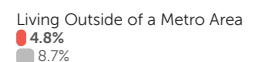
#### Family structure



#### Grandparent-headed households



#### Rural/Non-metro area





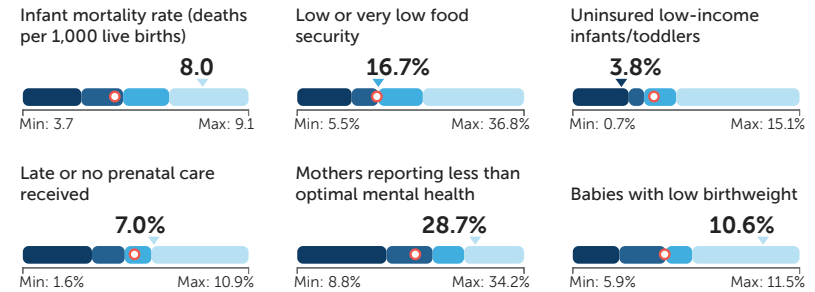
## What is Good Health?

Good physical and mental health provide the foundation for babies to develop physically, cognitively, emotionally, and socially. The rate of brain growth is faster in the first 3 years than at any other stage of life, and this growth sets the stage for subsequent development. Access to good nutrition and affordable maternal, pediatric, and family health care are essential to ensure that babies receive the nourishment and care they need for a strong start in life.

Louisiana falls in the Getting Started (G) tier of states when it comes to the overall health of infants and toddlers. The state's low ranking in the Good Health domain reflects indicators of food security, nutrition, and maternal health. However, Louisiana has a relatively lower percentage of low-income infants and toddlers who are uninsured compared to those in other states, putting the state in the Working Effectively (W) tier for this indicator.

## Six Key Indicators of Good Health

**KEY** ← Range of all state values → ▼ Louisiana ○ National average  
G Getting Started R Reaching Forward O Improving Outcomes W Working Effectively



## Good Health Policy in Louisiana

Medicaid expansion state	Yes <input checked="" type="checkbox"/>
State Medicaid policy for maternal depression screening in well-child visits	No policy
Medicaid plan covers social-emotional screening for young children	No <input type="checkbox"/>
Medicaid plan covers IECMH services at home	Yes <input checked="" type="checkbox"/>
Medicaid plan covers IECMH services at pediatric/family medicine practices	Yes <input checked="" type="checkbox"/>
Medicaid plan covers IECMH services at ECE programs	Yes <input checked="" type="checkbox"/>



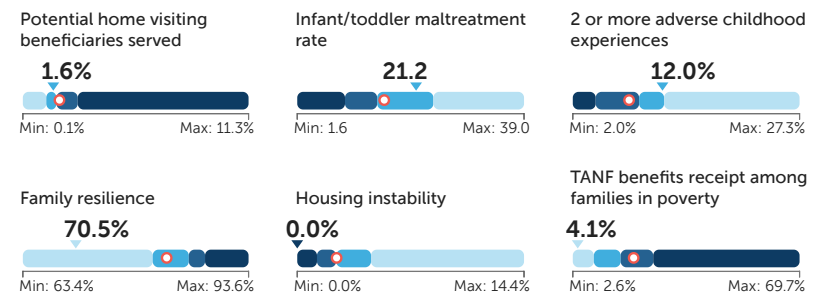
## What Defines Strong Families?

Young children develop in the context of their families, where stability and supportive relationships nurture their growth. All families of infants and toddlers benefit from support with parenting, and many—particularly those challenged by economic instability—need access to resources that help them meet their children's daily and developmental needs. Important supports include home visiting services, child welfare systems that are responsive to young children's needs, and family-friendly employer policies that provide paid sick and family leave.

Louisiana falls in the Getting Started (G) tier of states when it comes to indicators of Strong Families. The state's low ranking in this domain reflects indicators of child welfare, home visiting, and access to certain basic needs and supports, such as TANF benefits for families in poverty. However, Louisiana has a lower percentage of infants and toddlers experiencing housing instability compared to most other states.

## Six Key Indicators of Strong Families

**KEY** ← Range of all state values → ▼ Louisiana ○ National average  
G Getting Started R Reaching Forward O Improving Outcomes W Working Effectively



## Strong Families Policy in Louisiana

Paid sick time that covers care for child	No <input type="checkbox"/>
Paid family leave	No <input type="checkbox"/>



## What Defines Positive Early Learning Experiences?

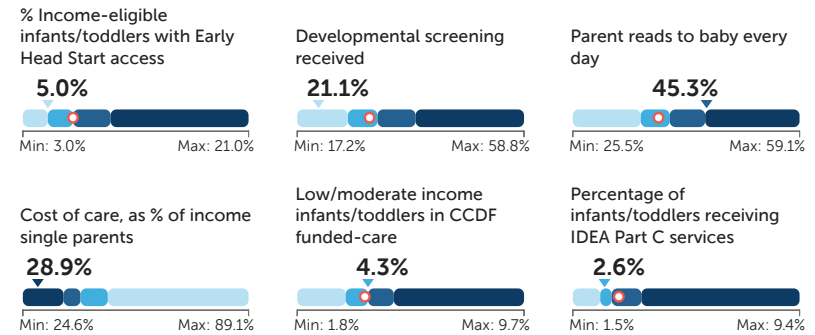
Infants and toddlers learn through play, active exploration of their environment, and, most importantly, through interactions with the significant adults in their lives. The quality of babies' early learning experiences at home and in other care settings has a lasting impact on their preparedness for life-long learning and success. Parents who require child care while they work or attend school need access to affordable, high-quality care options that promote positive development.

Louisiana scores in the Working Effectively (W) tier of states when considering key indicators related to early care and education early intervention for infants and toddlers. The state's high ranking in the Positive Early Learning Experiences domain reflects indicators such as its less burdensome costs of infant care as a percentage of single parents' and married parents' incomes. In contrast, Louisiana is in the Getting Started (G) tier when considering the percentage of income-eligible young children who have access to Early Head Start, and the percentage of infants and toddlers who received a developmental screening in the past year.

## Six Key Indicators of Positive Early Learning Experiences

KEY ← Range of all state values → ▼ Louisiana ○ National average

G Getting Started R Reaching Forward O Improving Outcomes W Working Effectively



## Positive Early Learning Experiences Policy in Louisiana

Families above 200% of FPL eligible for child care subsidy No ❌

## All indicators for Louisiana

G Getting Started R Reaching Forward O Improving Outcomes W Working Effectively

### Good Health

G Eligibility limit (% FPL) for pregnant women in Medicaid	138.0	National average: 200.0	W Uninsured low-income infants/toddlers	3.8%	National average: 5.8%
R Low or very low food security	16.7%	National average: 16.5%	G Infants ever breastfed	67.0%	National average: 83.2%
G Infants breastfed at 6 months	39.0%	National average: 57.6%	G Late or no prenatal care received	7.0%	National average: 6.2%
G Mothers reporting less than optimal mental health	28.7%	National average: 22.0%	W Preventive medical care received	97.0%	National average: 90.7%
O Preventive dental care received	35.2%	National average: 30.0%	G Babies with low birthweight	10.6%	National average: 8.2%
G Infant mortality rate (deaths per 1,000 live births)	8.0	National average: 5.9	G Received recommended vaccines	66.8%	National average: 70.7%

## Strong Families

<b>W</b> Housing instability	<b>0.0%</b> <i>National average: 2.5%</i>	<b>R</b> Crowded housing	<b>11.1%</b> <i>National average: 15.6%</i>
<b>G</b> TANF benefits receipt among families in poverty	<b>4.1%</b> <i>National average: 20.6%</i>	<b>R</b> Infant/toddler maltreatment rate	<b>21.2</b> <i>National average: 16.0</i>
<b>G</b> Unsafe neighborhoods	<b>8.4%</b> <i>National average: 6.3%</i>	<b>G</b> Family resilience	<b>70.5%</b> <i>National average: 82.6%</i>
<b>W</b> 1 adverse childhood experience	<b>16.1%</b> <i>National average: 21.9%</i>	<b>R</b> 2 or more adverse childhood experiences	<b>12.0%</b> <i>National average: 8.3%</i>
<b>R</b> Infants/toddlers exiting foster care to permanency	<b>98.5%</b> <i>National average: 98.4%</i>	<b>R</b> Potential home visiting beneficiaries served	<b>1.6%</b> <i>National average: 1.9%</i>

## Positive Early Learning Experiences

<b>O</b> Parent reads to baby every day	<b>45.3%</b> <i>National average: 38.2%</i>	<b>W</b> Parent sings to baby every day	<b>66.2%</b> <i>National average: 56.4%</i>
<b>G</b> % Income-eligible infants/toddlers with Early Head Start access	<b>5.0%</b> <i>National average: 7.0%</i>	<b>W</b> Cost of care, as % of income married families	<b>6.6%</b> <i>National average: N/A</i>
<b>W</b> Cost of care, as % of income single parents	<b>28.9%</b> <i>National average: N/A</i>	<b>R</b> Low/moderate income infants/toddlers in CCDF funded-care	<b>4.3%</b> <i>National average: 4.2%</i>
<b>G</b> Developmental screening received	<b>21.1%</b> <i>National average: 30.4%</i>	<b>O</b> Infants/toddlers with developmental delay	<b>0.0%</b> <i>National average: 1.1%</i>
<b>R</b> Percentage of infants/toddlers receiving IDEA Part C services	<b>2.6%</b> <i>National average: 3.1%</i>		